



## GlueArt 3.0 Instant Fix Kit

### Fixing Systems

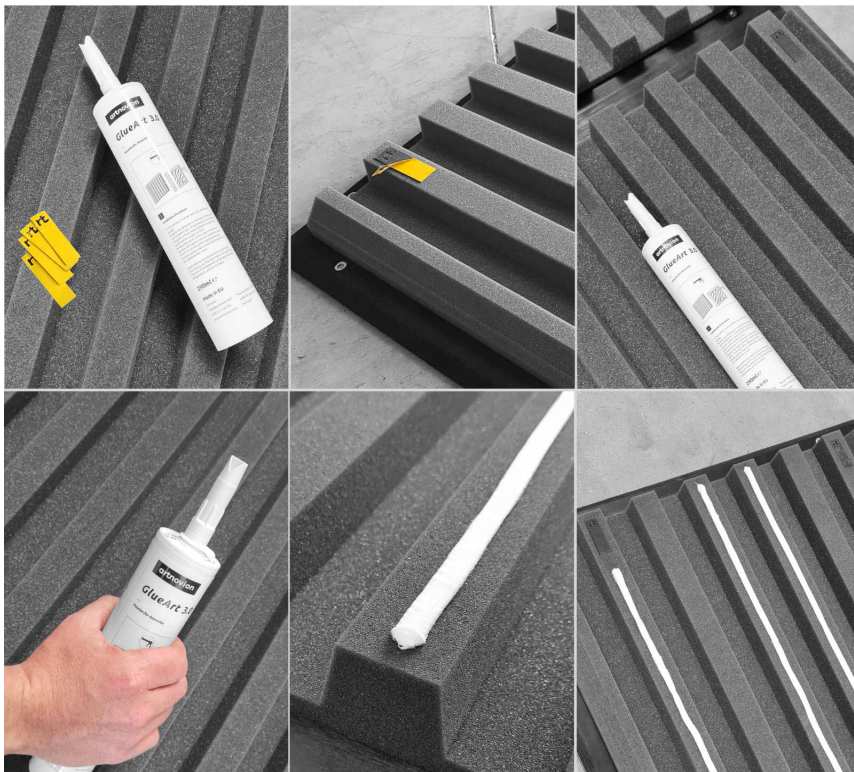
RESIDENTIAL & Hi Fi  
PRO AUDIO & STUDIO

### Specifications

Each Kit contains 3 tubes and 96 double sided adhesive strips.

The Kit installs either 24 standard panels (595x595mm) or 48 dimi panels (595x297mm).

Glueart 3.0 Instant Fix Kit is a kit designed to facilitate fixing panels using Glueart 3.0. Panels are fixed using a combination of extra-strong double sided adhesive, that secure even heavier panels in place whilst the adhesive dries. The kit comes with 3 tubes of Glueart 3.0 and 96 double sided adhesive strips, enough to install 24 panels.



hello@artnovion.com  
[www.artnovion.com](http://www.artnovion.com)



## GlueArt 3.0 Instant Fix Kit

### Fixing Systems

RESIDENTIAL & Hi Fi  
PRO AUDIO & STUDIO

### Instructions

1. The surface must be clean, dry, and free of grease.

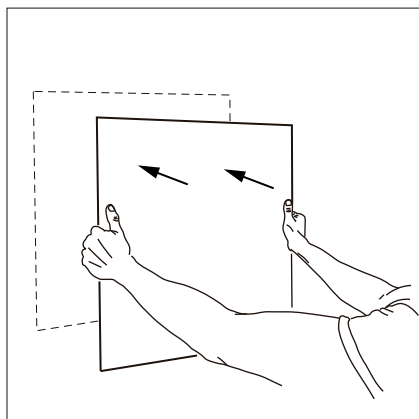
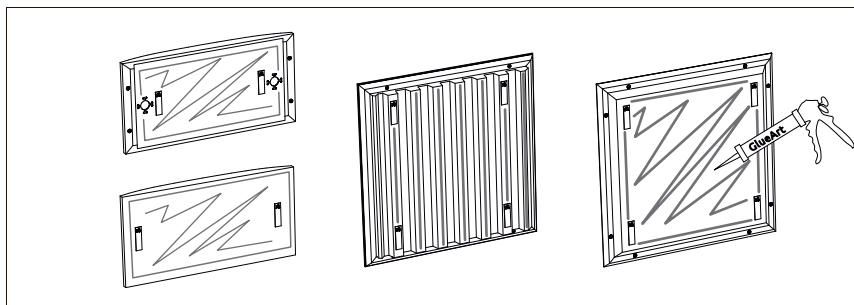
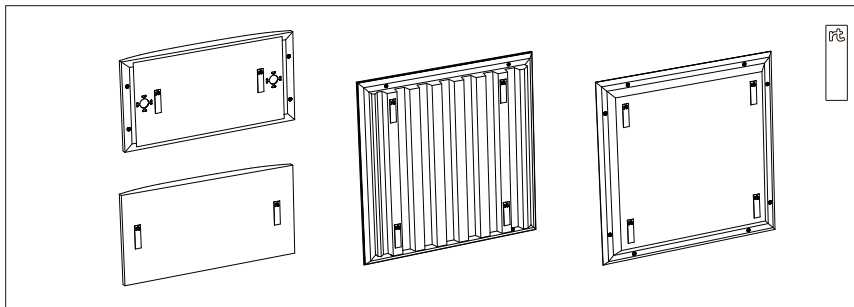
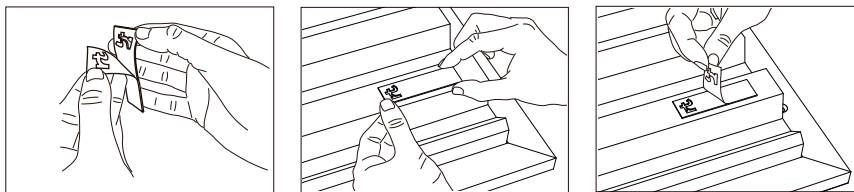
2. Apply extra-strong double sided adhesive on the panel.

3. Apply the adhesive to the back of the panel with a sealant gun. If applying to an extremely irregular surface, apply adhesive to both the panel and the target surface.

4. Place the panel on the wall in the correct position and apply pressure.

Install the panel within 10 minutes after applying the glue. Heavier panels require additional support until the adhesive has cured.

Avoid making any adjustments to the panel after gluing, as this may reduce the glue force. The cure time depends on the layer thickness, temperature, and air humidity.



hello@artnovion.com  
[www.artnovion.com](http://www.artnovion.com)