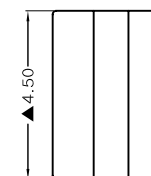
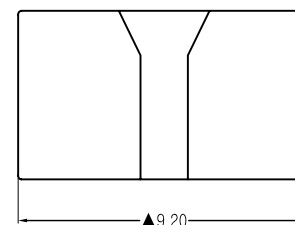
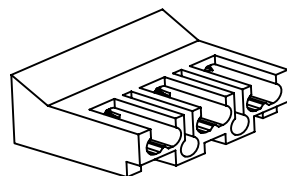
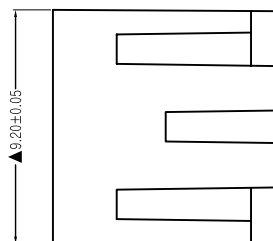
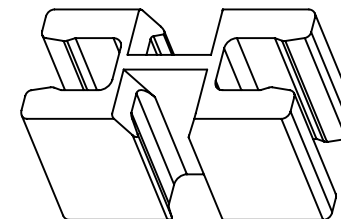
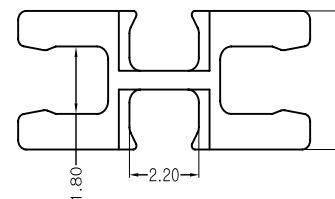
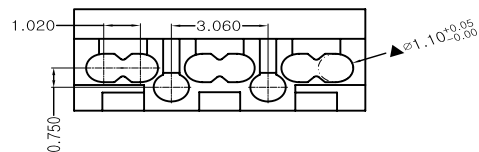
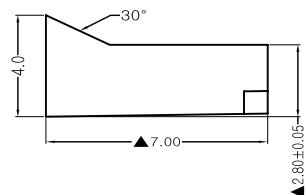
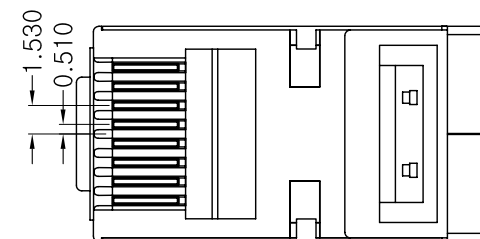
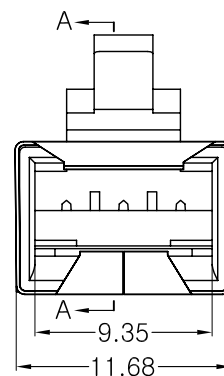
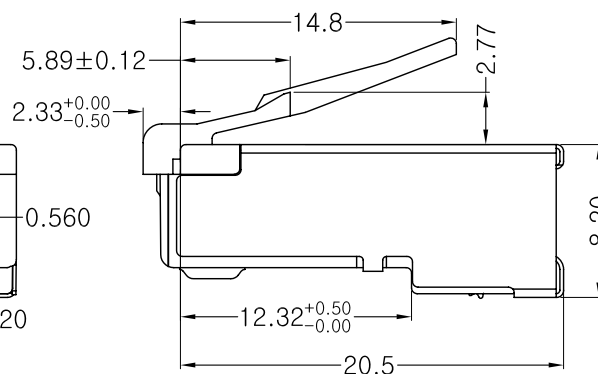
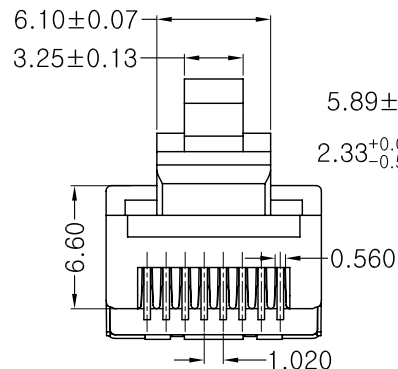



SECTION A-A

NOTES:

1. Operation Temperature:  $-40^{\circ}\text{C} \sim +85^{\circ}\text{C}$ .
2. Electrical Characteristics:
  - 2.1>Rated Current: 125V AC, 1.5A@25°C.
  - 2.2>Contact Resistance: 20mΩ Max.
  - 2.3>Insulation Resistance: 500MΩ Min, 100V DC/min.
  - 2.4>Voltage Proof: 1000V AC/1 minute no breakdown.
3. Mechanical Characteristics:
  - 3.1>Insertion Force & Withdrawal Force: 30N Max.
  - 3.2>Durability: 750 cycles Min.
4. Environmental compliance:
  - 4.1>the products are compliant with the RoHS, and REACH etc.



APPROVED	CHECKED	DRAWN	CUSTOMER:		DESCRIPTION:	
			ITEM NO.	MD-21S		
			DRAW NO.			
			UNIT	mm		
			SCALE	NONE	RJ45 connector Cat 6a shielded 20 pack	