

ifi



ZEN DAC
Signature
V2

Tech Lowdown

Special By Design

The new ZEN DAC Signature V2 has been improved even further to offer an even greater listening experience.

Enjoy music without any distortion or colourations.




- NEW! Now full-MQA decoder
- NEW! Upgraded clock circuitry
- Enhanced, purist, audiophile design
- Fully-balanced differential circuitry
- Premium parts selection inspired by £3,000 iFi Pro range
- Fully-balanced 4.4mm output desktop DAC/preamp
- Simple functionality



Hi-Res USB DAC

- NEW! 16-XMOS chip
- Now a FULL MQA decoder
- Completes all three unfolds to deliver the highest possible sound quality
- Handles up to PCM 384kHz and DSD256



 Pulse Code Modulation	 Direct Stream Digital	 Digital eXtreme Definition	
Double-DSD128		Quad-DSD256	
5.6 MHz	6.2 MHz	11.2 MHz	12.4 MHz
176.4 kHz	192 kHz	352.8 kHz	384 kHz

Audio Format LEDs



Original Sample Rate



PCM 88.2/96/176.4/
192/352.8/384kHz



DSD 64/128



MQA



MQA Studio



PCM 44.1/48kHz



DSD 256

Unmatched Noise Reduction

- Unmatched noise reduction and resolution
- Boutique components
 - Panasonic OSCON
 - Panasonic ECPU Film capacitors
 - ELNA Silmic



Panasonic
OS-CON



ELNA[®]

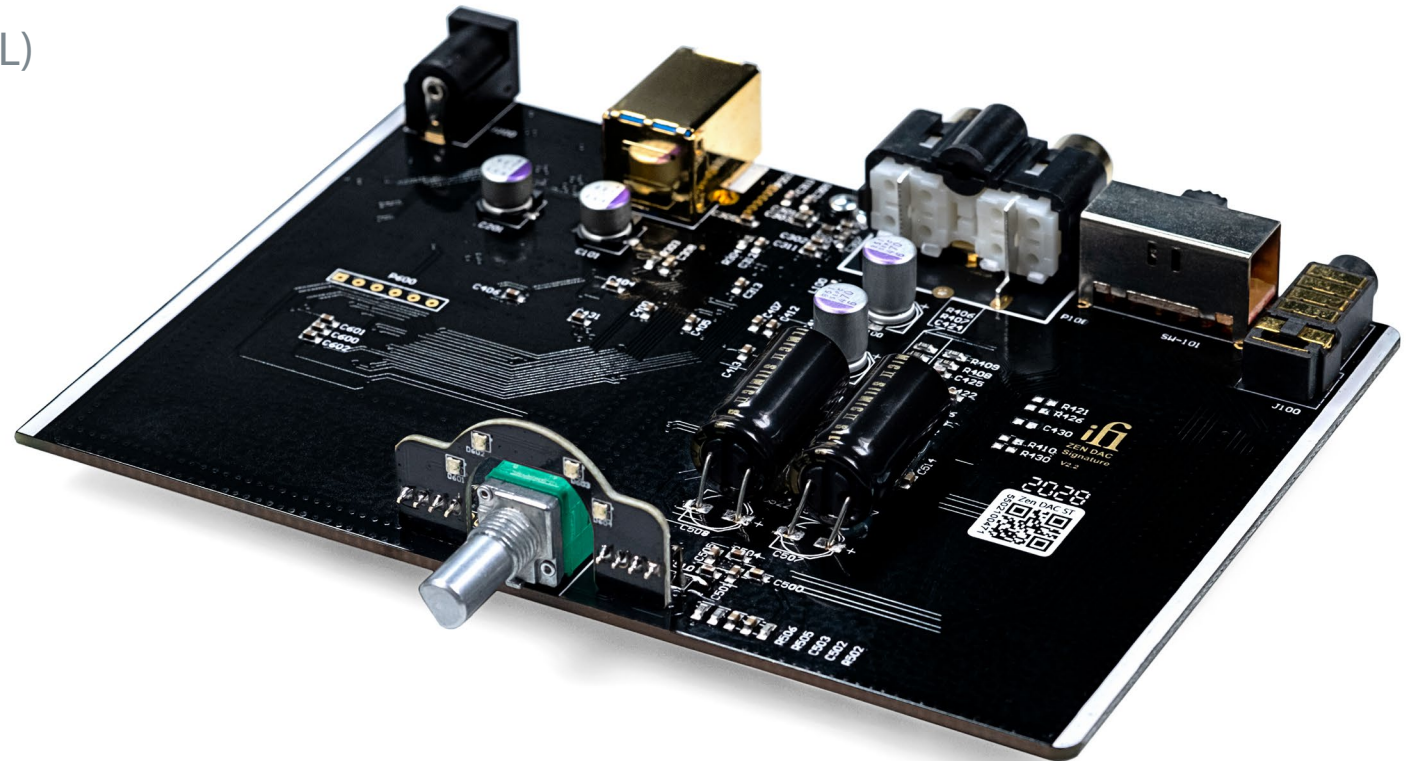
Upgraded GMT



- NEW! Upgraded Global Master Timing (GMT) clock circuitry
- Improved low-jitter clock with >20dB better performance
- Enhanced sonics

Pro Series | True Differential Balanced Circuit

- Fully-symmetrical, dual-mono signal stage
- Gold-plated 4.4mm balanced connection
- SNR = $< -116\text{dB(A)}$ @ 0dBFS (UnBAL/BAL)



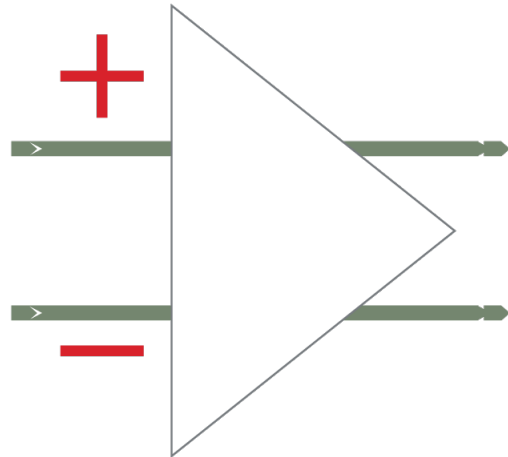
Analogue Volume Control | Fixed Or Variable

- **Variable** - use this setting if you wish the ZEN DAC Signature V2 to control the volume of powered speakers or its volume as a preamp.
- **Fixed** - use this setting if using with downstream equipment with its own volume control. This will bypass the ZEN DAC Signature V2 as if there was a 'straight wire' from the digital source to the analogue amplifier.



Balanced Analogue Stage

Balanced



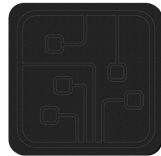
- Balanced analogue circuitry design
- Outstanding components – including C0G capacitors from TDK
- Balanced analogue output via 4.4mm > XLR or other balanced
- Interconnects – use for an active speaker or amplifier

Superior Design And Components

Panasonic
Excellent noise reduction capability



Xmos USB controller with iFi optimised firmware



Black military spec PCB

TEXAS INSTRUMENTS
Precision low-noise power supply

TOCOS
Tokyo Cosmos Electric Co., Ltd.
Tokyo Cosmos Electric potentiometer

Panasonic OS-CON
Excellent noise reduction capability and frequency characteristics



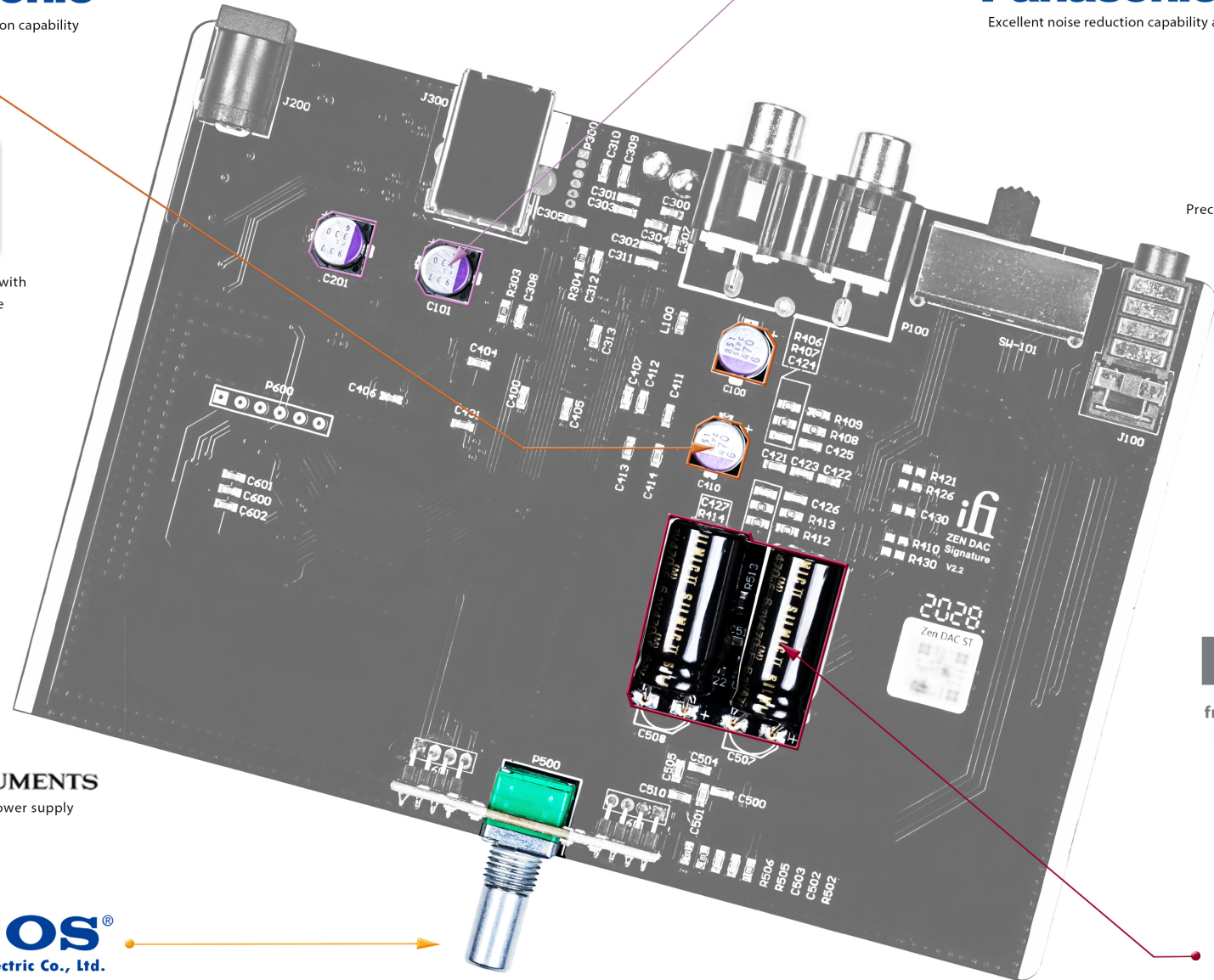
Precision audio-grade oscillators



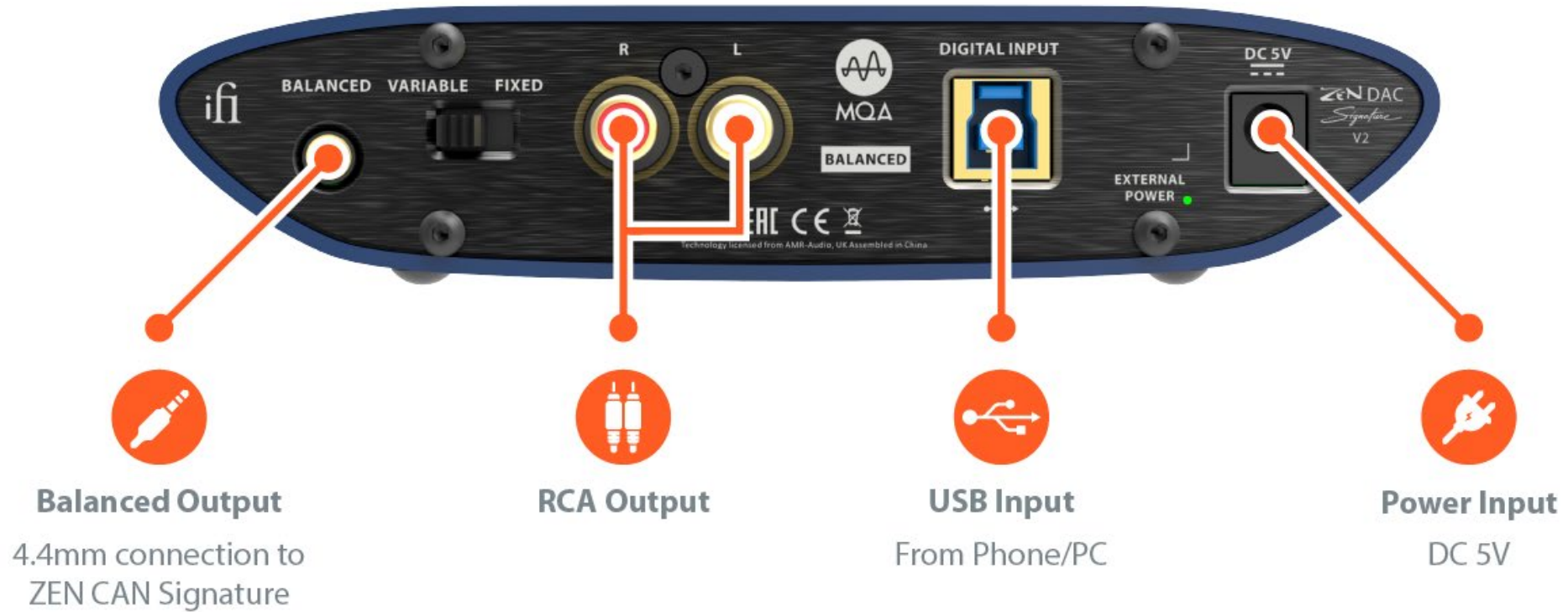
muRata
INNOVATOR IN ELECTRONICS
Murata Low-ESR high Q multilayer capacitor

BB
Burr-Brown Products from Texas Instruments
Burr-Brown Native DSD DAC

ELNA
Elna Silmic II capacitors



Connections



Specifications

Input Voltage	DC 5V / 2.5A		
Input	USB 3.0 Socket (USB 2.0 compatible)		
Formats	44.1 / 48 / 88.2 / 96 / 176.4 / 192 / 352.8 / 384kHz PCM 2.8 / 3.1 / 5.6 / 6.2 / 11.2 / 12.4MHz DSD 353 / 384kHz DXD MQA		
DAC	Bit-Perfect DSD & DXD DAC by Burr Brown		
Line Section			
Output	Balanced 4.4mm	2V / 6.2V max. (variable)	4.2V fixed
	UnBAL RCA	1V / 3.3V max. (variable)	2.1V fixed
Zout	<= 200 Ohm		
	<= 100 Ohm		

SNR	<-116dB(A) @ 0dBFS (UnBAL/BAL)	
DNR	>116dB(A) @ -60dBFS (UnBAL/BAL)	
THD + N	<0.0015% @ 0dBFS (UnBAL/BAL)	
Power Consumption	No Signal	~0.5W
	Max Signal	~2.5W
Dimensions	158 x 117 x 35 mm	
	6.2" x 4.6" x 1.4"	
Net weight	505 g (1.11 lbs)	

ifi
audio