



JLAB®  
JBUDS PARTY  
BLUETOOTH  
SPEAKER

**We love that you are rocking JLab!**  
**We take pride in our products and fully stand behind them.**



#### YOUR WARRANTY

All warranty claims are subject to JLab authorization and at our sole discretion. Retain your proof of purchase to ensure warranty coverage.



#### CONTACT US

Reach out to us at [support@jlab.com](mailto:support@jlab.com) or visit [jlab.com/contact](http://jlab.com/contact)

#### REGISTER TODAY

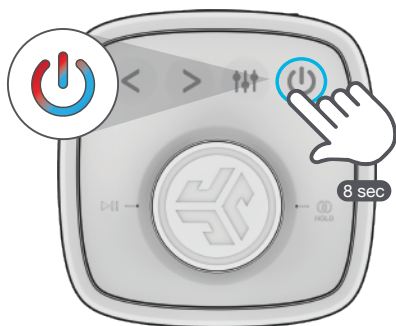
[jlab.com/register](http://jlab.com/register)

Product updates | How-to tips  
FAQs & more

## PAIR UP

1

Press and hold button. Lights will flash **blue/red** to indicate pairing mode.



2

Select JLab JBuds Party in your device settings to connect.



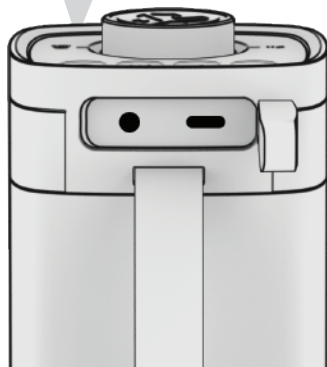
## GET CHARGED



PULSES:  
CHARGING



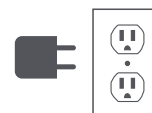
LIGHTS OFF:  
CHARGED



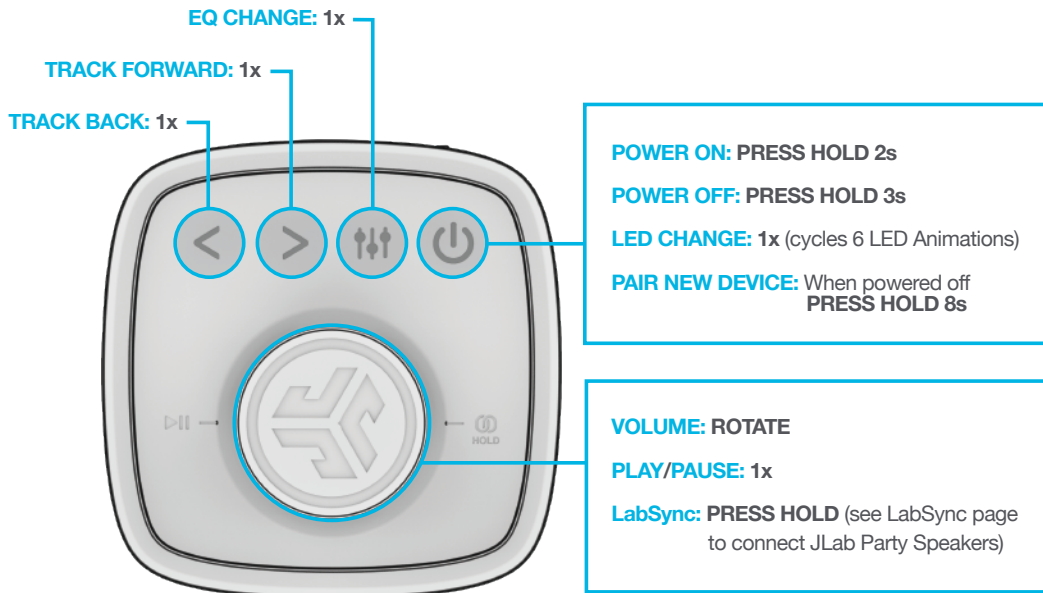
Connect to computer  
or USB charger.



OR



## GO AHEAD, PRESS THE BUTTON

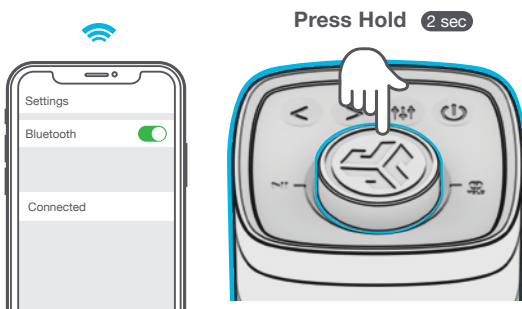


### QUICK TIPS:

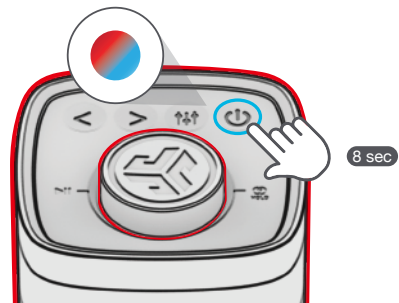
- JBuds Party is set to Eco-Mode by default. Lights will turn off when battery is less than 25% to conserve power.
- Turning off the lights will significantly improve playtime.
- JBuds Party will auto power off if no media is playing for 30 minutes.
- Download the JLab App to adjust the default settings.
- LabSync works with all JLab Pop Party, GO Party, JBuds Party, and Epic Party speakers.

## LabSync (CAST TO OTHER JLAB PARTY SPEAKERS)

- 1** Connect **JBuds Party** to your device.  
Press Hold to enter LabSync.  
**JBuds Party** will say "LabSync"



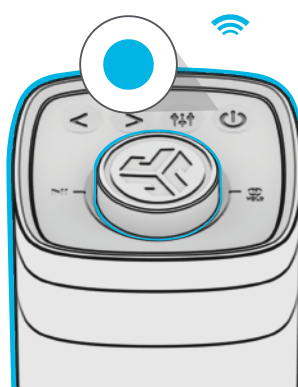
- 2** With your other **JLab Party Speaker(s)** turned off, Press hold power button until LEDs flash blue/red.



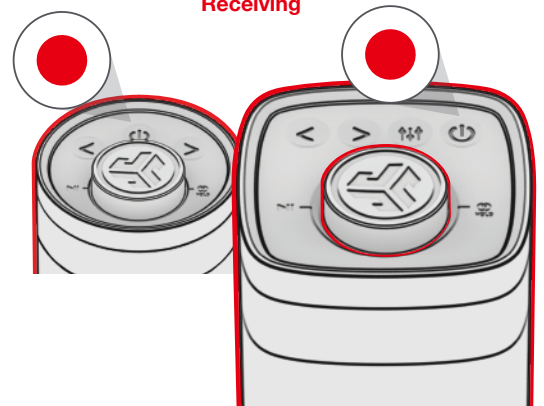
- 3** Followed by entering LabSync on your other speaker(s).



- 4** Casting



Receiving



DOWNLOAD THE APP

Customize the Sound, Lights, and Features.



[Shop products](#) | [Product alerts](#) | [Burn-in your headphones](#)

JLab Store + Burn-in Tool

