



POP PARTY  
BLUETOOTH  
SPEAKER

We love that you are rocking JLab!  
We take pride in our products and fully stand behind them.



#### YOUR WARRANTY

All warranty claims are subject to JLab authorization and at our sole discretion. Retain your proof of purchase to ensure warranty coverage.



#### CONTACT US

Reach out to us at [support@jlab.com](mailto:support@jlab.com)  
or visit [jlab.com/contact](http://jlab.com/contact)

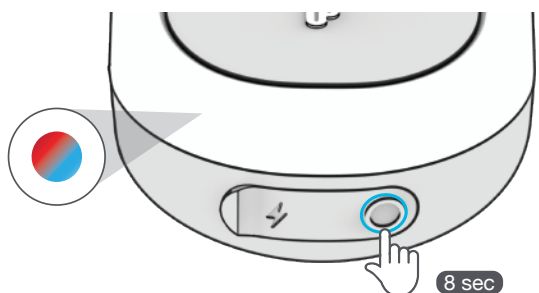
### REGISTER TODAY

[jlab.com/register](http://jlab.com/register)

Product updates | How-to tips  
FAQs & more

## PAIR UP

1



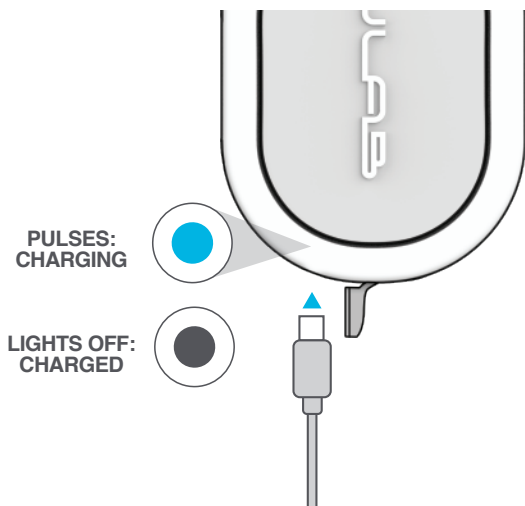
Press and hold button for **8 seconds**. Lights will flash blue/red.

2

Select JLab Pop Party in your device settings to connect.

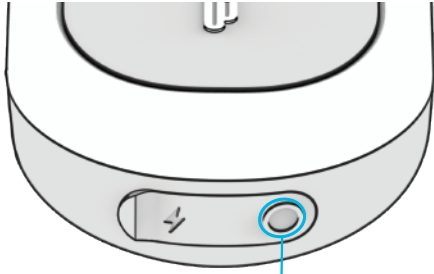


## GET CHARGED



Connect to computer  
or USB charger.

## GO AHEAD, PRESS THE BUTTON



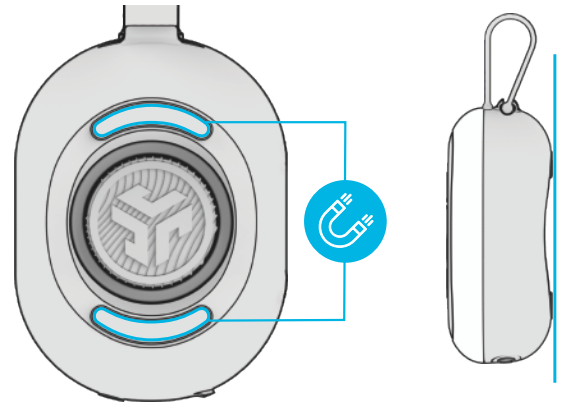
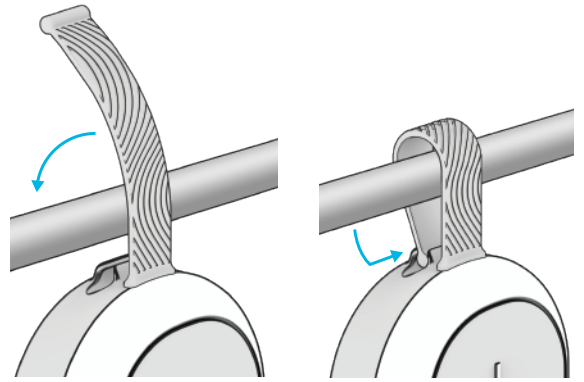
**POWER ON:** PRESS HOLD 2s  
**POWER OFF:** PRESS HOLD 3s  
**PAIR NEW DEVICE:** When powered off **PRESS HOLD 8s**  
**PLAY/PAUSE:** 1x  
**TRACK FORWARD:** PRESS HOLD 2s  
**LED CHANGE:** 2x (cycles 6 LED Animations)  
**EQ CHANGE:** 3x  
**LabSync:** 5x (see LabSync page to connect JLab Party Speakers)

### QUICK TIPS:

- Pop Party is set to Eco-Mode by default. Lights will turn off when battery is less than 25% to conserve power.
- Turning off the lights will significantly improve playtime. Adjust preferences accordingly.
- Download the JLab App to adjust the default settings.

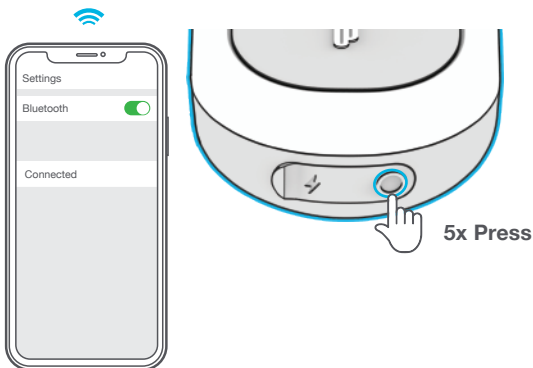
## ON THE GO

Connect USB-C cable to computer/tablet/phone for wired mode.

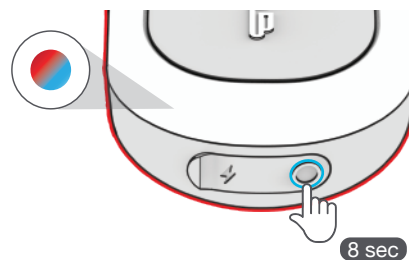


## LabSync (CAST TO OTHER JLAB PARTY SPEAKERS)

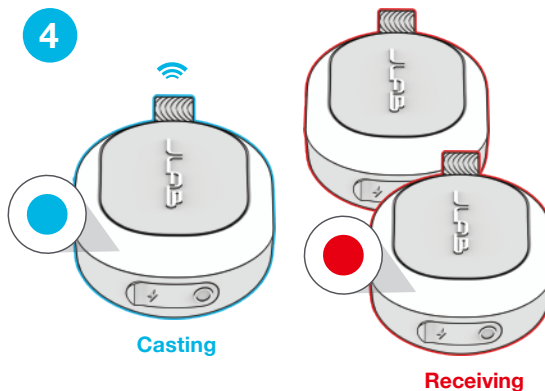
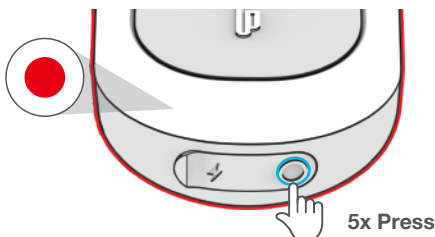
- 1** Connect **Pop Party** to your device.  
5x press to enter LabSync.



- 2** With **JLab Party Speakers** powered off,  
**Press hold** until flashing blue/red.

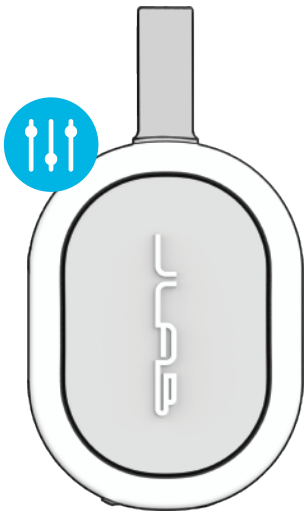


- 3** Followed by **5x Press** to enter LabSync.



DOWNLOAD THE APP

Customize the Sound, Lights, and Features.



[Shop products](#) | [Product alerts](#) | [Burn-in your headphones](#)

JLab Store + Burn-in Tool

