



Loewe **klang sub5**

Subwoofer to complement the soundbar

Active wireless subwoofer for home cinema

360 watts total music power with two active 6" drivers and four passive 6" radiators

Hexagonal, point-symmetrical design to compensate for moving masses

360° design with painted stainless steel plate and special acoustic fabric

Absolutely free of vibration and oscillation

Perfect complement for Loewe klang bar3 mr and klang bar5 mr *

Loewe wireless digital audiolink technology

Lossless and latency-free wireless signal transmission

LOEWE. was found by the Loewe brothers as Radio Frequenz GmbH in Berlin in 1923.

Today we still design, develop and produce consumer electronics – Made in Germany.

bild – is the German word for picture or image.

klang – is the German word for sound or tone.

* Any number of klang sub5s can be connected to a klang bar3 mr or klang bar5 mr at the same time

Data sheet

Loewe **klang sub5**

March 2024

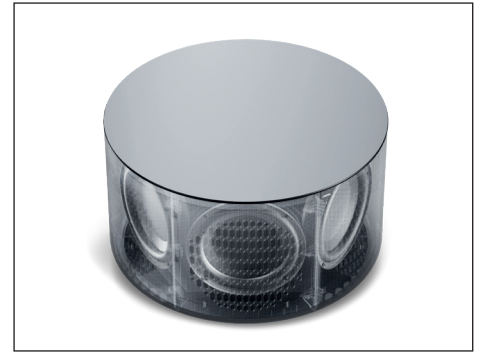
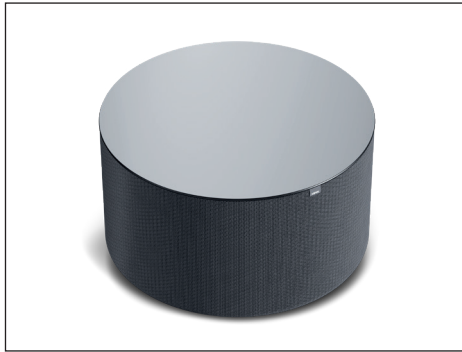
LOEWE.

www.loewe.tv



Loewe **klang sub5**

Active wireless subwoofer to complement the soundbar



The subwoofer: invisible power.

The round and pleasing 360° design allows to place the wireless subwoofer almost anywhere. Its powerful and controlled low-frequency sound spreads evenly and non-localisable throughout the room – without disturbing the neighbours with structure-borne noise: Thanks to the clever design with a precisely balanced, mirrored construction in hexagonal arrangement, it always remains outwardly vibration-free at peace in itself.


Elegance and perfection in every detail.

A lacquered stainless steel plate covers the top of the subwoofer and simultaneously dampens any interfering stimulus through its sheer mass. The special two-yarn woven and robust acoustic fabric creates a vivid visual plasticity. The power connection and level control are unobtrusive located on the bottom and rear panels. The Loewe system colour basalt grey and the typical Loewe signature flag round off the harmonious 360° design.

Bigger inside than outside.

The active subwoofer delivers a total music output of 360 watts and has in total of more than 1.000 cm² of effective membrane surface from 2 active 6-inch drivers and 4 passive radiators. This means it can easily play down to 35 Hertz low frequency and offers an astonishingly impressive bass foundation in the home cinema. The Loewe Wireless Digital Audio Link 2.0 ensures lossless and latency-free signal transmission.

Colour

 basalt grey

Model

klang sub5

Article

60603

Loewe **klang sub5**

Active wireless subwoofer to complement the soundbar

Achievements



reddot winner 2021



“The klang bar5 mr together with the klang sub5 hits the spot.”

Audio Video Foto Bild, edition 12/2022
about klang bar5 mr incl. klang sub5
test score 1,4 VERY GOOD



“The Loewe klang bar5 mr with the sub5 is (...) a real pleasure to listen to.”

HiFi Test, edition 5/2022 about klang bar5 mr incl. klang sub5
test score Reference Class, 1+, HIGHLIGHT

Loewe **klang sub5**


Active wireless subwoofer to complement the soundbar

System components

Loewe **klang bar5 mr**

5.1.2 Dolby Atmos soundbar with wireless subwoofer and 800 watts total music power

Colour

 basalt grey



Model

klang bar5 mr

Article

60601

Loewe **klang bar3 mr**

3.1 Dolby Atmos soundbar with integrated subwoofer and 360 watts total music power

 basalt grey




klang bar3 mr

60614

Loewe **klang mr5**

Wireless active speakers with 180 watts for multichannel home cinema or multiroom audio

 basalt grey



klang mr5

60606

Loewe **klang mr3**

Wireless active speakers with 150 watts for multichannel home cinema or multiroom audio

 basalt grey




klang mr3

60605

Loewe **klang mr1**

Wireless active speakers with 30 watts as rear surround or for multiroom audio

 basalt grey



klang mr1

60604

Loewe **klang sub5**

Active wireless subwoofer to complement the soundbar

Technical data

Loewe klang

sub5

Audio (acoustic)

Frequency range (Hz) @ ±3 dB	35-150
Orientation front / side / up / rear firing	radial (motion compensation)
Acoustic speaker concept	closed + passive membranes
Channel configuration (speaker layout)	0.1 (subwoofer)
Driver total amount	6
Driver active	2x 6"
Driver passive	4x 6"
2-channel crossover	● low pass

Audio (electric)

Frequency range (Hz) @ ±1 dB	10-200
Class-D amp	●
Power (watts sine / music)	180 / 360
Total harmonic distortion @ 1 watt / 10 watts	< 1
Dynamic range / Signal to noise ratio (dB)	16 bit / > 60
Bass and treble control / loudness	● (gain adjustment) / —
Balance / gain adjustment (dB)	— / ● (via volume knob)
Protection circuit: heat / current / voltage / short cut	● / ● / ● / ●

Media and reception

Multiroom audio support	● (via klang bar mr)
Multichannel home cinema support	●

Connectivity and interfaces

Bluetooth	—
Wireless Digital Audiolink (second generation)	●
Analogue audio jack in (3.5 mm stereo)	●

Network and formats

WLAN (Wi-Fi) standard	—
WLAN (Wi-Fi) power (max. mW)	< 100
WLAN (Wi-Fi) frequency range	5725-5850 MHz
WLAN (Wi-Fi) encryption	—
WLAN (Wi-Fi) encryption WPA	—

Energy and environment

Mains voltages AC	100-240V, 50/60 Hz
Power consumption eco standby mode (watts)	0,5
Power consumption network standby mode (watts)	0,5
Ambient temperature while in operation	5-35° C
Relative humidity (non-condensing)	20-80%

Dimensions

Weight (approx. kg)	8,8
W* x H x D (approx. cm)	38,0 x 21,4 x 38,0

Scope of Delivery

Manual / power cord	● / ●
Others	—

Optional accessories

Selection of recommended setup solutions and audio systems	klang bar5 mr, klang bar3 mr, iconic v, iconic i
--	--

● = available, ○ = optional, — = not available

Technical changes and delivery options are subject to change without notice. The product portfolio may be different and might vary depending on the country. Service matters are all handled individually.