

Neo TV - User manual

For LG, Samsung and Sony TV

This user manual is for the product Neo TV, where the product is the link between a TV from LG, Samsung and Sony (Loewe and Philips coming soon) and Bang & Olufsen speakers. It is all operated with a Beo4 or a Remote One.

Introduction

A good film is best experienced if both picture and sound are perfect.

The picture from an LG, Samsung and Sony TV is perfect, but lacks the sound from Bang & Olufsen speakers.

Neo TV ensures that the sound is transferred digitally to the B&O speaker via power link. The sound and TV are controlled with the familiar B&O remote control.

Security

In order to comply with safety and not cause any harm to physical products or persons, the following must be respected.

- Check immediately that the packaging is not damaged and Neo TV is not damaged. Do not use the product if it is damaged. Contact your supplier.
- Dispose of the packaging according to the regulations in force where you live.
- Use only supplied AC/DC supply
- Use only approved cables
- Do not insert any objects into plugs and holes other than approved cables
- Do not disassemble or modify the product.
- Do not expose the product to strong shocks or vibrations
- Stop using the product if smoke or a strange smell is seen from the product
- Do not use organic solvents such as alcohol, petrol or paint thinner to clean the product.
- Do not wet the product with any means.
- Remove dust from the product regularly with a dry cloth.
- Do not wrap the product in fabric or adhesive so that the product cannot get fresh air.
- Do not stick your fingers into open plugs or other openings in the product
- Small loose screws are included for mounting the product - make sure that children do not have access to the screws

Environmental considerations

If Neo TV is no longer operational or no longer required, it must be disposed of in a safe manner. Return it to your local authority for recycling so that the parts of the product can be recycled or destroyed in a proper way.

Contents of the package

Before you start installing the product, check that the package contains a Neo TV with a 12V power supply.



Not included

- Toslink cable between Neo TV and your TV
- Network cable for the Internet
- Power Link Cable

Overview of daily service

TV	Beo4	Beo4 Navi	Remote One
Turn on TV	TV	TV	TV
Turn off TV	Standby	Standby	Standby
Channel change on TV - up	Yellow button	Yellow button	P+
Channel change on TV - down	Blue button	Blue button	P-
TV Guide (EPG)	Green button	Green button	Guide button
Show Menu on screen	Menu	Menu	Menu
Settings	LIST + PC	LIST + PC	LIST + FORMAT
Back in a menu	Stop	Stop	Back
Exit out of all menus	Exit	Back	Exit

Setting up the product

Do not connect the supplied power supply until all other cables are installed.

Place the Neo TV in a safe place so that the IR signal from the B&O remote control has unobstructed access to Neo TV.

Before use, ensure that all fitted cables are undamaged or have visible external damage.

The product must be set up before use. The following set-up of the product must be carried out

- Preparing the B&O remote control
- Neo TV must be adapted to the brand of TV installed

- TV must be prepared so that the sound comes out of the digital output, ensuring that the sound is transferred in the best way to the B&O speaker
- Setting the sound level on the B&O loudspeaker

Preparing the B&O remote control

You need to adapt your B&O remote control to the new setup with your TV. It is recommended to read the manual of the B&O remote control used - which can be downloaded directly from the Bang & Olufsen website.

You need to adapt the remote control to the required buttons in the LIST menu.

The following buttons need to be added to the LIST menu

- PC button - this is used to generate Settings on the TV (Beo4)
- FORMAT button - this is used to produce Settings on the TV (Remote One)

The method for adding buttons to the LIST menu is described in the manual on the Bang & Olufsen website.

Setting up the TV for correct audio output

Neo TV gets the sound from the TV digitally via an optical fibre cable, also called Optical Toslink.

The sound is sent directly through Neo TV to the B&O speaker via the Power Link cable.

There is a volume control of the sound - controlled from the B&O remote - but otherwise the sound is not disturbed.

TV must be set up to send sound out of optical two-link output.

Often the TV has the option to send the audio to both Toslink and the TV's own speaker, or to Toslink only. We recommend only to the Toslink output, so the sound is only regulated via the B&O remote control.

Consult the TV's own manual to make this setup.

Typically, this is done by choosing

- **Settings** on TV, then
- **Sound** and finally
- **Audio output**

Select **Optical**.

Select **PCM**

Note - very important: Digital audio output must be set to PCM - otherwise the sound will not work on Neo TV and thus in your B&O speaker.

Note - Neo TV turns on when TV turns on and turns off when TV turns off. This is controlled by the optical cable. It is therefore important that the optical signal is present. Check this by looking at the end of the cable - if there is a red light, then the optical signal is present, and it is correctly set up.

Choice of TV brand

Neo Tv is designed to fit several TV brands. The following brands can be used

No	Make	Note
101	LG	In operation
102	Samsung	In operation
103	Philips	Planned - coming later
104	Sony	In operation
105	Loewe	In operation
106	Panasonic	Planned - coming later
107	Sharp	Planned - coming later
108	Hisense	Planned - coming later

If you want to change the TV brand, do the following

(NOTE, this can only be done when the TV is off/standby. If you are not sure if the TV is in standby, remove power from the TV before setting up)

MENU is the menu button on the remote control)

MENU 1 XXX GO

You need to replace the 3 pcs XXX with the number in the table. For example, if you want to set up for a Samsung TV with the number 102, do the following

MENU 1 102 GO

When the setup is done, the setup is automatically saved. If the setup was successful, two short BEEP's will be heard. If you hear a long beep, the setup did not go well and you have to do it again.

Setting the sound level on the Beolab loudspeaker

The sound from the B&O speaker can be adjusted with the B&O remote control.

The sound can be set up in two areas. A desired start-up sound and a maximum sound level can be set.

Start-up sound

The start-up sound can be adjusted between 0% (sound is completely gone) to 100% (sound is at maximum level). From factory, the startup level is limited to 20%. This can be changed between 0% and 100%.

Warning - do not set the startup volume higher than 50%. This can cause hearing damage to people in the room.

Don't worry if the 20% start-up sound is satisfactory.

If you want to change the startup sound you can do the following via the LIST buttons.

(NOTE, this can only be done when the TV is off/standby. MENU is the menu button on the remote control).

Pressure:

MENU 3 XXX GO

You then need to replace the three XXX with your desired starting sound level. For example, 000 for 0% or 010 for 10% or 030 for 30% sound level.

To set 30% startup sound level press the following

MENU 3 030 GO

If the setup went well you will hear 2 short BEEP sounds. If the setup did not go well, you will hear a long BIP sound. Try again until you get 2 short BIP sounds.

Note that the start-up sound cannot be set higher than the maximum sound level. The factory setting for maximum sound level is 100%, but it can be set lower (see next section).

Maximum sound

MENU 2 XXX GO

Technical help

If a technical problem occurs with Neo TV , you must rectify the fault before contacting the place of purchase.

If the product gets into a state where it no longer responds to the remote control, you can try the following

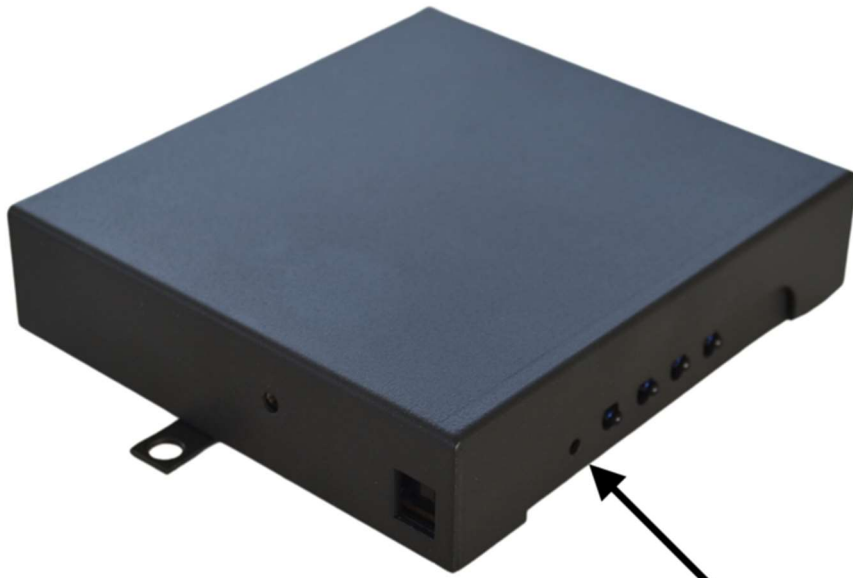
1. Disconnect the power to the product by unplugging the power supply from the wall outlet or unplugging the 12 V cord from the product. Wait 5 seconds and reconnect the power. If this does not help, go to point 2
2. You can zero the product - back to its original setting. This is done by pressing the following on the remote control. The TV must be switched off.
Note that you must then set up the product again - see above in the manual.

MENU 9 9 8 GO

This will reset all settings

3. Disconnect the 12 V cable from Neo TV. Wait 10 seconds.
Press and hold the Reset button on the product.
(Use the end of a paper clip or similar. Press carefully so as not to damage the small push button inside the product)
Now connect the power while holding the Reset button.
This will reset everything on the product and you will need to perform the setup again.

You hear 4 short beeps in response to the fact that it went well.



Reset knap