



\*Record Puck PRO not included

# Debut PRO B

The most audiophile Debut yet

Satin: ●

- **NEW** pre-adjusted Pick it PRO Balanced cartridge
- **NEW** mini-XLR balanced phono output
- 8,6" one-piece carbon-aluminium tonearm
- Precision aluminium platter with TPE damping
- Fully adjustable VTA
- Nickel-plated aluminum bearing block
- Motor suspension with better damping
- Height-adjustable metal feet
- Electronic speed switch
- Precision belt drive with electronic speed control
- 8x hand-painted MDF chassis
- Premium semi-symmetrical phono cable
- Gold plated RCA connectors
- Dust cover included
- Handmade in Europe

**Speed:** 33, 45/(78) (electronic speed change)  
**Drive principle:** belt drive with electronic speed control  
**Platter:** 300mm, die cast aluminium platter with TPE damping and felt mat  
**Platter bearing:** high precision stainless steel axle in bronze bushing  
**Wow & flutter:** 33: +/-0,16%; 45: +/-0,14%  
**Speed drift:** 33: +/-0,40%; 45: +/-0,50%  
**Signal to noise:** 68dB  
**Tonearm:** 8,6" one-piece carbon-aluminium tonearm  
**Effective arm length/mass:** 218,5 mm / 10,0 g  
**Overhang:** 18,5mm  
**Included accessories:** 15V DC / 0,8A power supply, dust cover, 78 RPM round belt, 7" single adapter  
**Power consumption:** 4W / 0W standby  
**Dimensions:** 415 x 113 x 320mm (WxHxD)  
**Weight:** 6 kg net



### 8,6" Carbon-Aluminium Tonearm

The Debut PRO B features a one-piece carbon-aluminium sandwich tonearm.

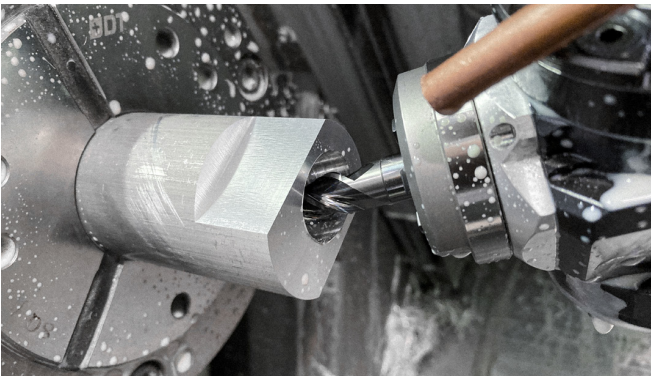
The carbon layer gives the tonearm a high degree of rigidity, while the inner aluminium tube takes over the damping of the tonearm.

This super stiff and uniquely dampened tonearm construction ensures perfect tracking of the record groove.

### Adjustable VTA & Azimuth

With the new tonearm of the Debut PRO B, both the azimuth and the vertical tracking angle (VTA) can be set. The tonearm height can be continuously adjusted by loosening the two grub screws.

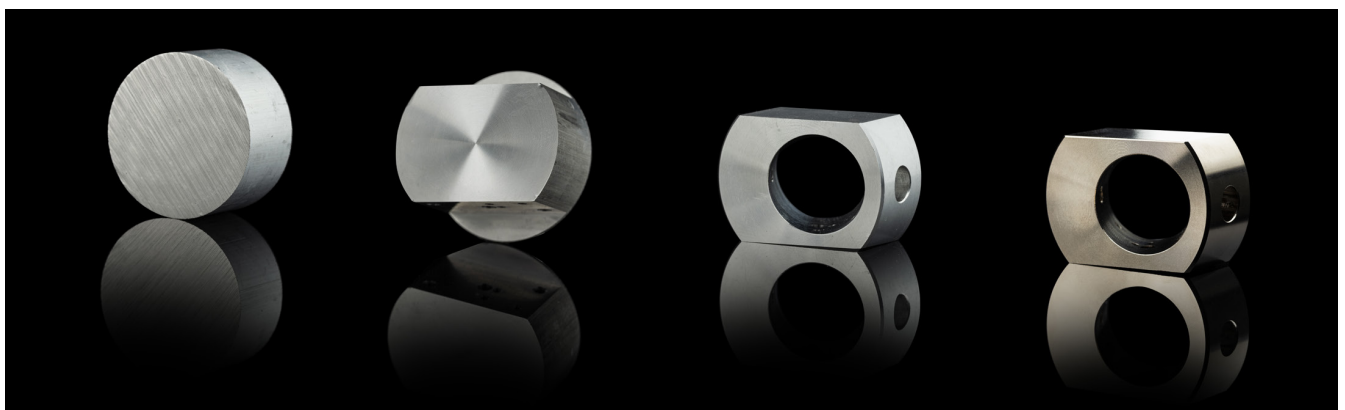
These settings of the Debut PRO B give you the option of adapting the tonearm to height changes, allowing the use of different turntable mats or other cartridges to always achieve the best sound quality.



### Nickel-plated metal parts

The nickel finish of the aluminum components results in a hard, resistant surface. This process enables us to produce very high-quality and sustainable components and avoid plastics and similar materials that continue to age over time.

The precision CNC milled parts are optically perfectly coordinated and lead the Debut PRO B to its modern simple, elegant and unprecedented design.



### Always the perfect speed

The speed, electronically controlled with precision, guarantees the most accurate and stable speeds. Change between speeds easily with the toggle switch. With the supplied round belt for 78 rpm, you can also listen to your shellac records.

So that no motor vibrations reach the pickup, the Debut PRO B has the new, proven motor suspension, which is responsible for the perfect decoupling of the motor.

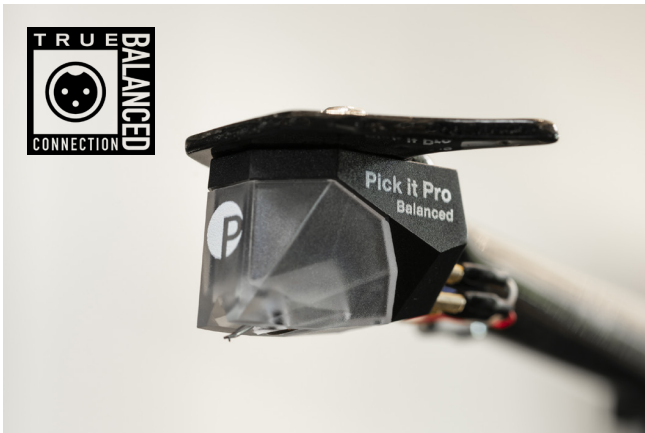


### The dampened platter

The die-cast aluminum platter gets reworked and precision balanced in an extra step to obtain a perfect platter.

The heavy aluminum platter has a ring made of TPE (thermoplastic elastomer) on the inside that helps to dampen all resonances and thus minimize wow and flutter.





### True Balanced

The included Pro-Ject Pick it PRO Balanced cartridge allows you a „True Balanced“ signal transmission.

This new Pick it PRO Balanced cartridge is a revised version of the Pick it PRO which allows you a „True Balanced“ signal transmission.

The big advantage of a balanced connection is its ability to remove picked up noise and interferences.

Our „True Balanced“ cable range offers you the perfect cable to connect your turntable to the Phono Box S3 B, Phono Box DS3 B or our Tube Box DS3 B.



**Phono Box S3 B**



**Phono Box DS3 B**



**Tube Box DS3 B**

### High quality phono cable

Cables are not able to make your sound system sound better, but they ensure that every detail and information of the signal is transmitted to the dedicated receiving device.

The included Connect it Phono E RCA is a high quality phono optimized cable. We focused on quality core materials like a copper conductor for a signal transmission without losses.

#### Upgrade to TRUE BALANCED

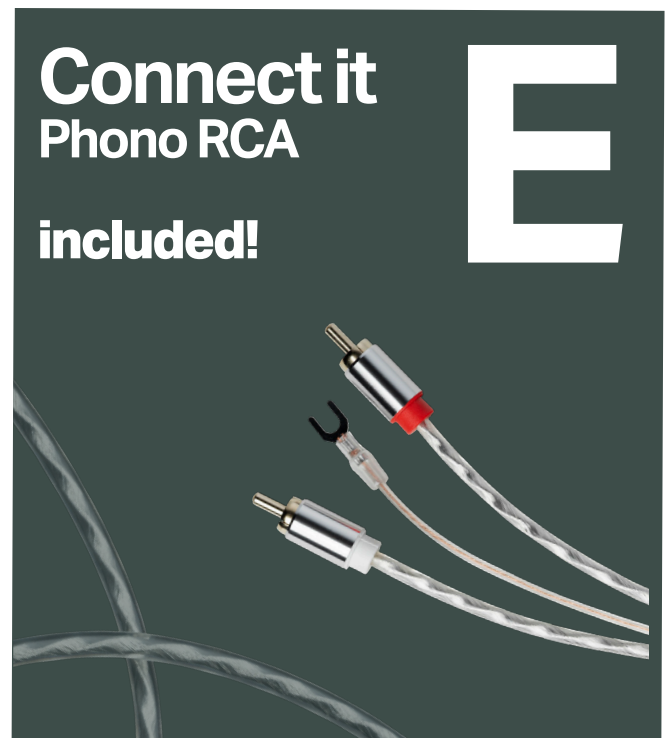
Use it in balanced configuration to ignite the full potential!

Get your True Balanced cable now!

Contact your dealer for more information or go to:



[www.project-audio.com/connect-it-cables](http://www.project-audio.com/connect-it-cables)

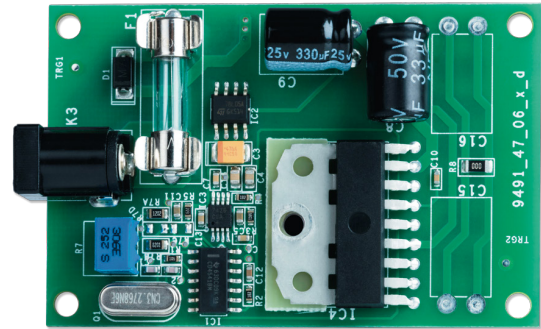




### Sophisticated DC/AC power generator

In all our turntables, we use a “cheap looking” switch mode power supply. We do this, as we use a precision DC-driven AC generator inside the turntable, which powers the motor.

With this we create a completely clean new sine wave. This guarantees very clean power which results in enhanced speed stability.



### The upgrade for your phono setup

A clean and stable power is necessary for your phono setup. The included power supply is already a good base, but we want to go further.

The **Power Box S3 Phono** provides power for the Debut PRO B and also a Pro-Ject phono preamp. Its two outputs are specifically engineered to power Pro-Ject turntables and phono preamps.

The sophisticated DC filtration can have a dramatic impact on the sound quality.

In addition to the sound improvements, Power Box S3 Phono also offers its users a cleaner cable solution, avoiding PSU and cable mess.

