

## Record Pucks

190 g



Polished



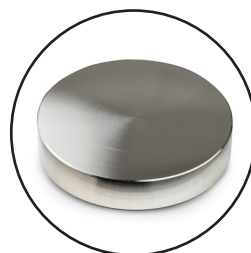
Black painted

**E**

Aluminium

(black)

(polished)



Nickel plated

**PRO**

Aluminium

315 g



Polished



Black painted

**S**

Aluminium

800 g



Transparent



Black painted

**Classic**

Brass

915 g



Polished



Black painted

**DS**

Stainless Steel

1030 g



Chrome








Black painted

**RS**

Brass

# Compatibility Overview

	Record Puck E & PRO 	Record Puck S 	Record Puck DS 	Record Puck Classic 	Record Puck RS 
E1 Line	x				
Elemental	x				
Primary E	x				
Juke Box	x				
T Line	x				
Debut Line	x	x			
The Classic (EVO)		x	x		
RPM 1 & 3 Carbon	x	x	x		
RPM 5 Carbon			x	x	
RPM 9 & 10 Carbon				x	x
6 PerspeX (Balanced)		x	x		
X1/X2/XA (B)	x	x	x		
X8			x	x	x
Xtension 9/10/12			x	x	x
Signature Line				x	x