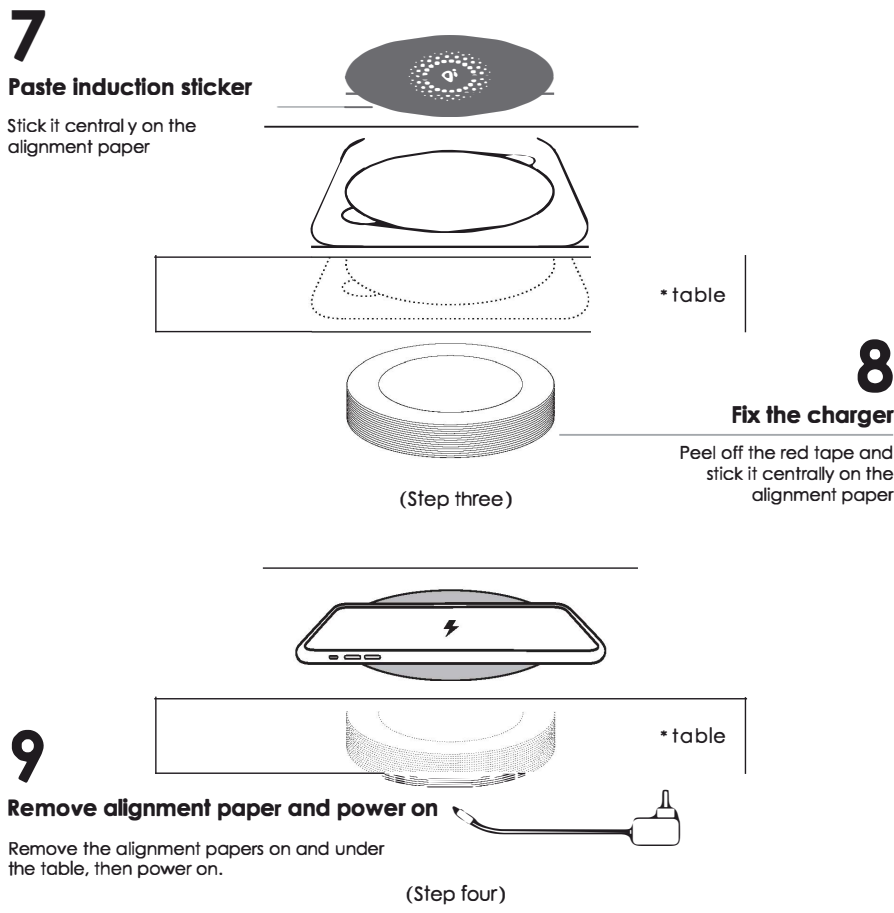
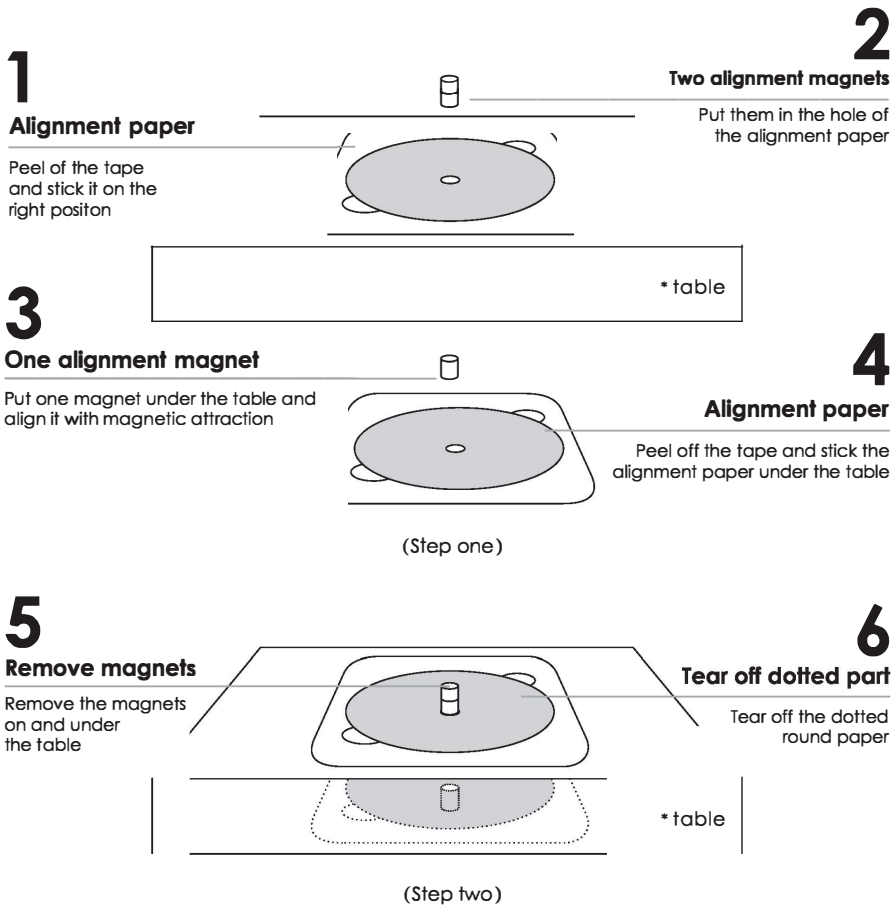
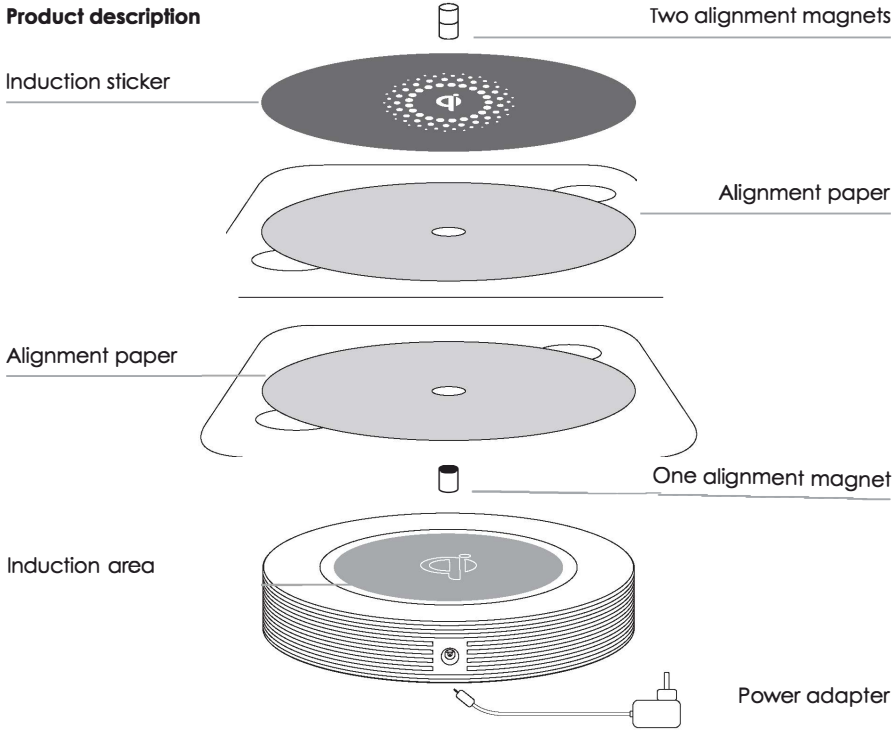


Instruction manual



M1
Long-distance wireless charger

M1 is a long-range wireless charging device that wirelessly charges mobile phones at a distance of 22 to 32 mm. Installed on the underside of the desk and suitable for marble, wood, glass and other non-metallic materials. It can be used at homes, offices, hotels and other places. It can wirelessly charge devices such as mobile phones that support Qi standards. It brings you wonderful life in a different charging way from new wireless charging technology.



Technical specification

Model : M1
Input : 19V/1A
Output : 5V/1A (MAX)
Conversion Rate: ≤60%
Weight : 220g
Size: 130mm(Φ) * 22.5mm(H)

P.S.: Please apply it on marble, wood, glass and other non-metallic table or desk with the thickness of 22-32mm.

Safety instruction

1. Do not disassemble or throw into fire or water,to avoid causing a short circuit leakage.
2. Do not use wireless charger in severely hot,humidor corrosive environments,to avoid circuit damage and occurs leakage phenomenon.
3. Do not place too close with magnetic stripe or chip card (IDcard,bank cards,etc.) to avoid magnetic failure.
4. Please keep the distance at least 20cm between implantable medical devicesotential interference with the medical device.
- 5.To take care of the children,to ensure that they won't play the wireless charger as a toy,to avoid unnecessary accidents.

Notes

1. Please use original power adapter in case of insufficient electricity, otherwise insufficient input electric current might cause unstable charging.
2. Do not place too close with magnetic stripe or chip card (IDcard,bank cards,etc.)to avoid magnetic failure.
3. Make sure the plate doesn't get too hot.If the plate is too warm, take your phone off the plate, and switch the plate off. The plate may switch off automatically if it is too hot. when the plate has cooled down, try charging again.

FAQ and solution

1. Wireless charging is not working while buzzer inside the charger doesn't ring.
The wireless charger is not set up correctly or smartphone is not positioned in the right place. Pls double check the setup instructions or put your phone in the center of the induction sticker.

2.Both the charger and the phone are placed correctly, but the wireless charging is not working and buzzer dosen't ring when the charger is powered on.
Charger failure. Pls contact with after-so es.

3.Why it charges slowly than my original adapier came with the mobile device?
The wireless charging electricity is restricted by the phone or the external receiver coil itself. The charging effeciency will be affected by heat, so it is recommended to close some applications.

4.Is radiation from wireless charging harmful to one's heath?
The M1 wireless charger emits non-ionizing radiation which is not harmful to humans.

5.My device is hot while charging, is it normal?
If you don't charge your device in a good charging area ,the heat dissipation may not good and it will cause your phone hot during charging. M1 has overheat protection function.

6.Watch not charged?
Watch wireless charger is not setup correctly or product failure, pls contact with after-sales.

Warranty
We provide all our customers 12 months warranty from the date of purchase.

