

SR-C30A

COMPACT SOUND BAR AND
WIRELESS SUBWOOFER



SR-C30A

System Frequency Response 40 Hz-22 kHz

Front Speaker System

Maximum Effective Power 20 W x 2 (6 ohms, 1 kHz, 10% THD)
 Type Acoustic Suspension
 Driver Dual 4.6 cm (1-13/16") cone
 Terminals Optical Digital: 2, Analog Audio: 1
 HDMI: 1 (TV ARC)
 Dimensions (W x H x D) 600 X 64 X 94 mm (23-5/8" x 2-1/2" x 3-3/4")
 Weight 1.3 kg (2.9 lbs)
 Standby Power Consumption 0.3 W (HDMI-CEC off, Bluetooth standby off),

Wireless Subwoofer

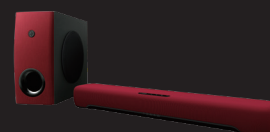
Maximum Rated Power 50 W (3 ohms, 10% THD) /100W
 Type Bass-reflex
 Driver 13 cm (5-1/8") cone
 Dimensions (W x H x D) 160 X 335 X 364 mm (6-1/4" x 13-1/4" x 14-3/8")
 Weight 5.7 kg (12.6 lbs)
 Power Consumption 20 W

Features

Alexa Built-in	-
Wireless Subwoofer	Yes
Bluetooth®	Yes
Airplay 2	-
Virtual Surround	3D
App	Sound Bar Remote



Black



Red

TRUE SOUND

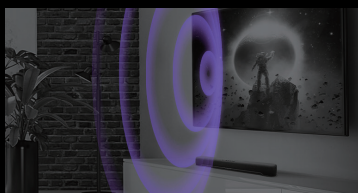


The size of your screen isn't the only part of an immersive experience.
 Become truly immersed with sound from the SR-C30A.



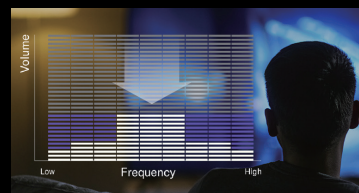
WIRELESS AND SEAMLESS

What good is an explosion or superhero fight scene without the punch of bass? Powerful bass is what lets you feel the action. The SR-C30A includes a wireless subwoofer with a compact footprint, for bass you can feel - and fit wherever you want.



PERFECTLY MATCHED SOUND

The original technology in the SR-C30A goes beyond conventional speaker directivity to create a breathtaking sound field that seems to be coming above the sound bar itself, from the center of the TV screen.



REALISM AT ANY VOLUME

Unleash the maximum beauty of sound at any volume. With our Adaptive Low Volume technology, our sound reproduction maintains a full and expressive presence, even when watching at low volumes.

YAMAHA'S UNIQUE TECHNOLOGIES

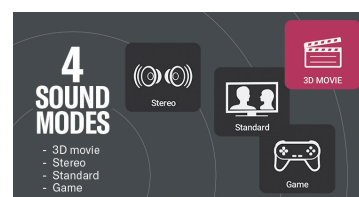
CLEAR VOICE

Find it hard to hear TV dialogue? Our Clear Voice technology makes human voices more audible. Hear every word—from YouTube videos to movies and shows, especially when background music and sound effects try to take center stage.



FOUR SOUND MODES

With four different sound modes, you can match the sound to your content and mood. Stereo mode works great for music and podcasts. Standard mode is ideal for TV programs. Try Game mode to immerse yourself in your latest battle, and use 3D Movie mode to create an expansive theater experience.



OTHER FEATURES

SLIM AND COMPACT

More than 30% narrower than our normal sound bar and over 40% less in volume, this sound bar takes up even less space.



SLIM, YET STRONG SUBWOOFER

A small, narrow footprint with an expressive range that is infinitely deep.



EASY SETUP AND CONTROL

Connect easily with a single cable. Conveniently adjust volume and sound modes with included remote or dedicated app - the Sound Bar Remote App.

